

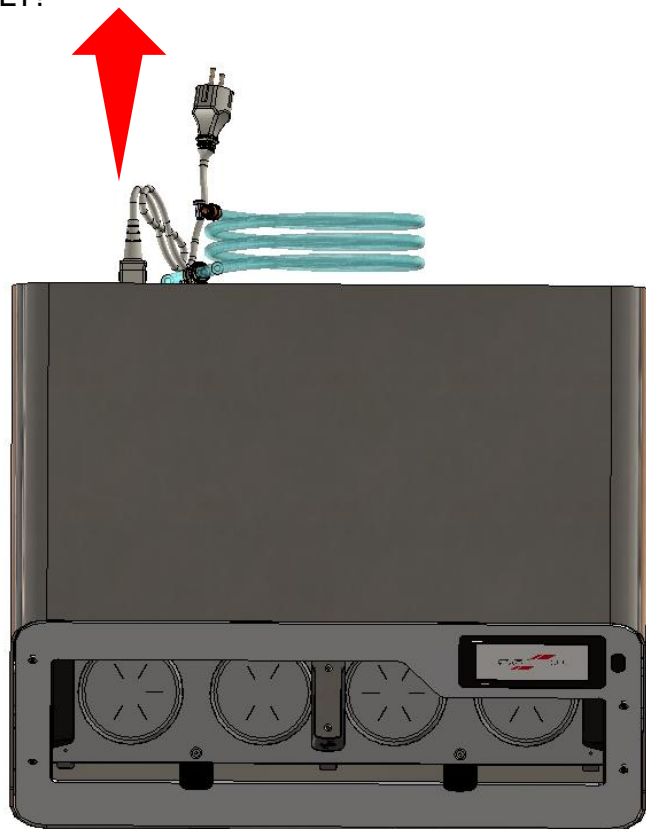


Repair manual BIOSTAR® 4-Aligner

13 Replacement guide plate with
spring 3030.113 *from SN 10136*

Replacement guide plate with spring 3030.113 *from 10136*

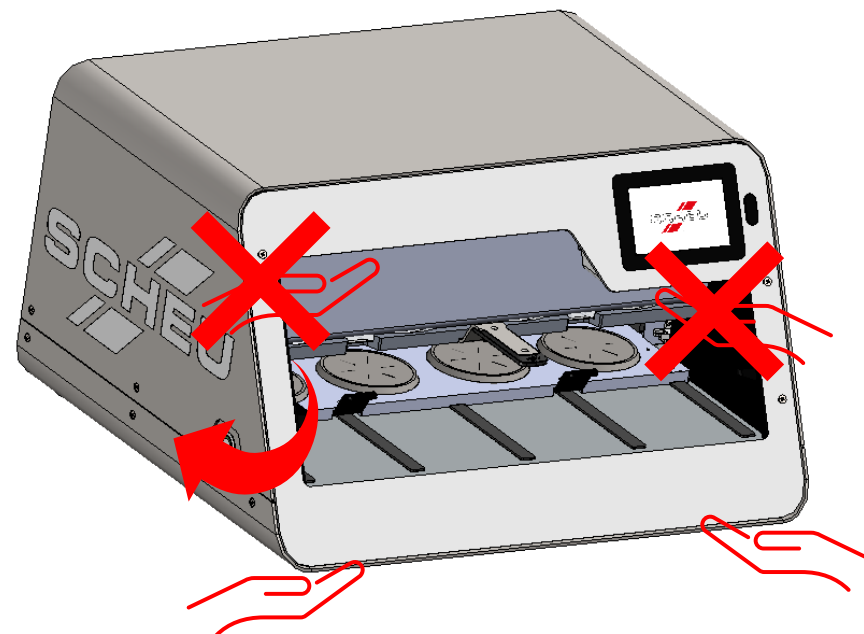
- 1** DISCONNECT THE DEVICE FROM THE MAINS POWER SUPPLY!



- 2** Turn the device over so that the rear of the device is freely accessible.

Please DO NOT lift the device by the FRONT PANEL but instead grasp it from underneath!

Ensure that the latest software version is installed.

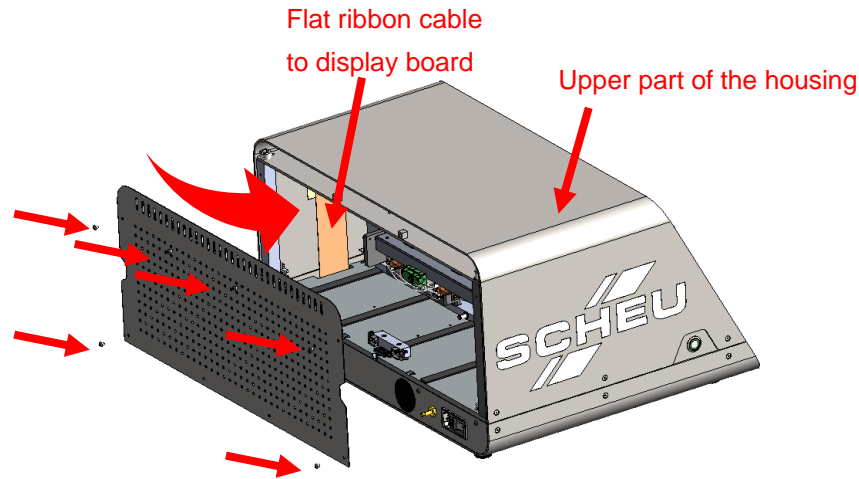


Replacement guide plate with spring 3030.113 *from SN 10136*

3

Remove the 6 screws from the rear panel.

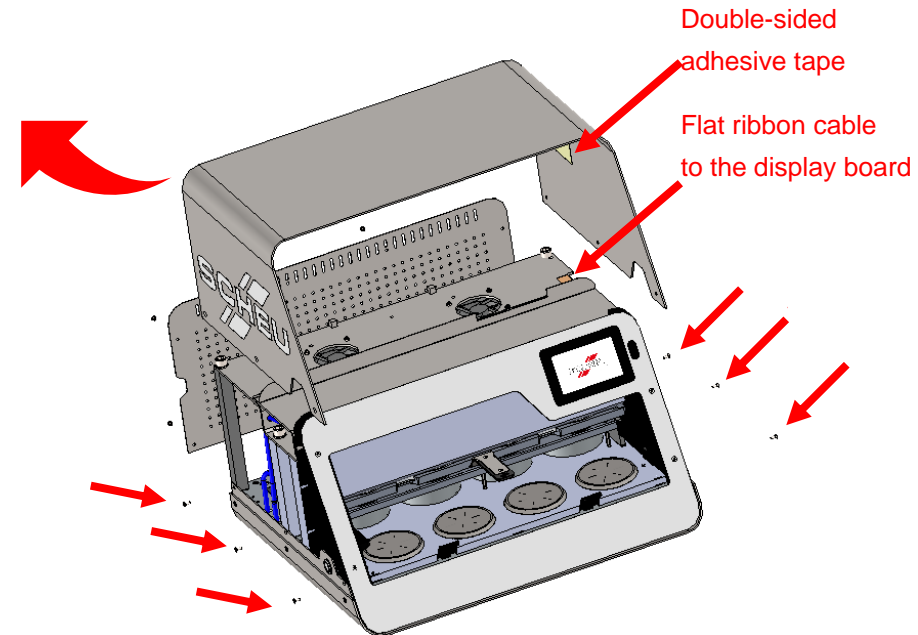
Then press on the sides of the upper part of the housing to carefully detach the ribbon cable from the double-sided adhesive tape on the upper part of the housing.



4

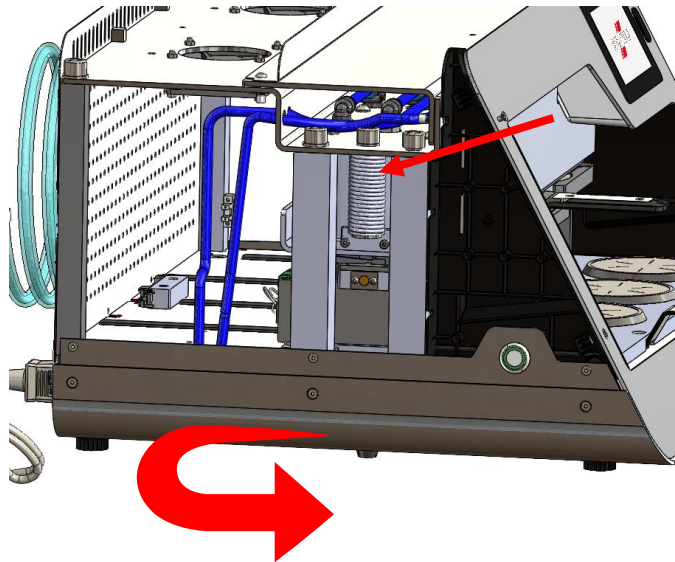
Loosen the 6 screws on the upper part of the housing.

Caution! If necessary, remove the ribbon cable from the adhesive tape again.



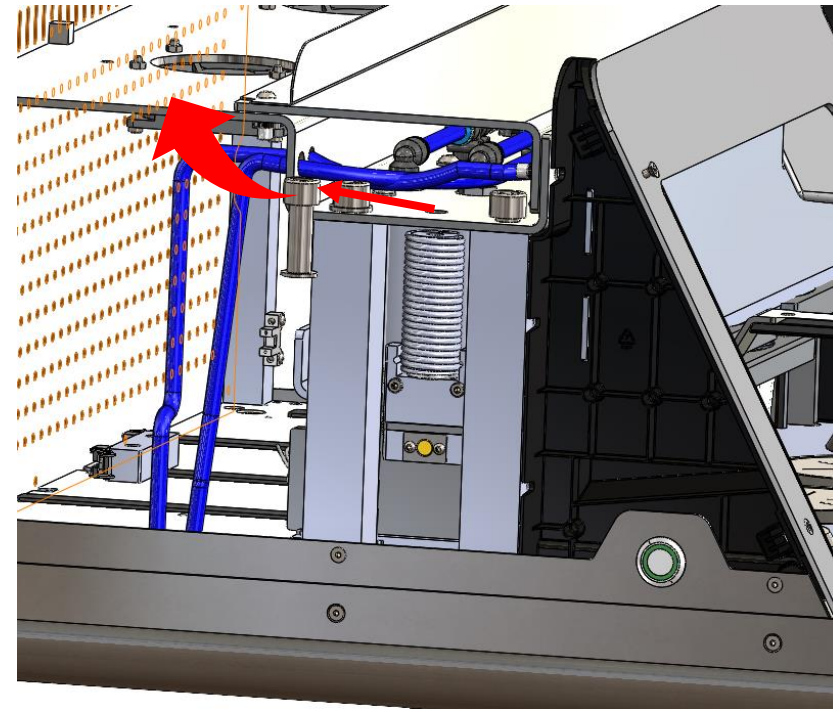
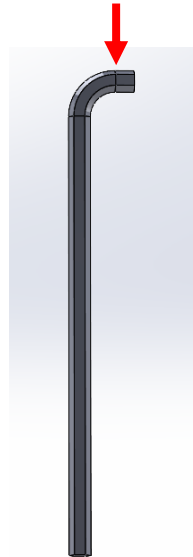
Replacement guide plate with spring 3030.113 *from SN 10136*

- 3** Turn the device so that you can access the springs from the side.



- 4** Remove the M10x30 hexagon socket screw with a shortened Allen key, including the washer, and set it aside.

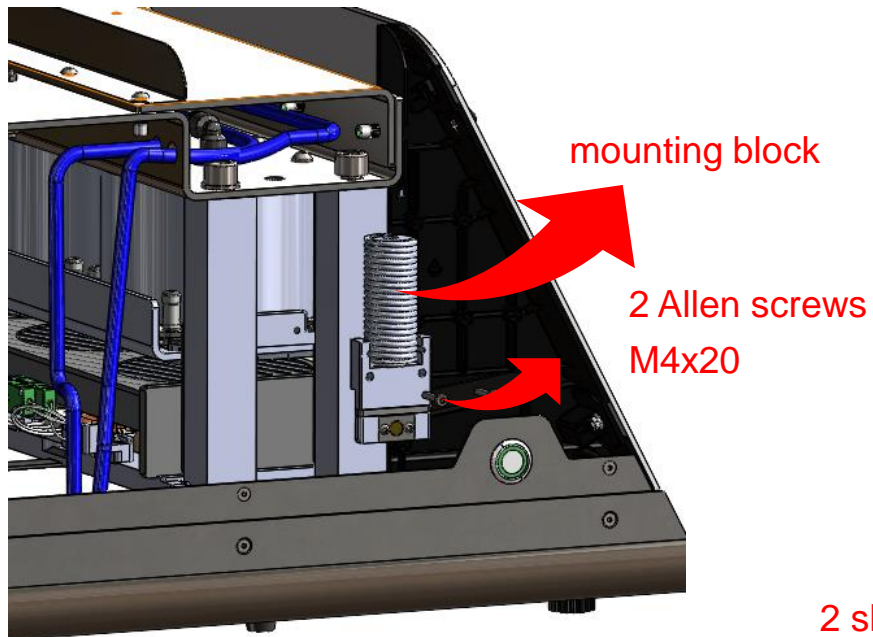
Allen key
shortened



Replacement guide plate with spring 3030.113 from SN 10136

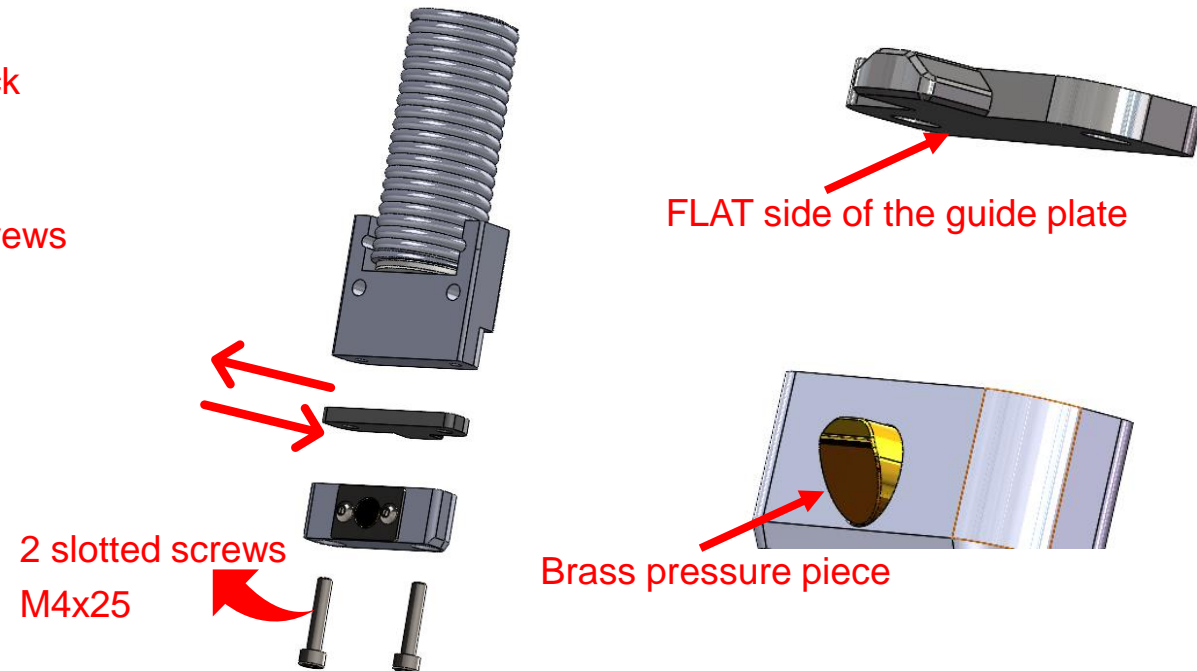
5

Remove the 2 Allen screws and take out the mounting block including the spring.



6

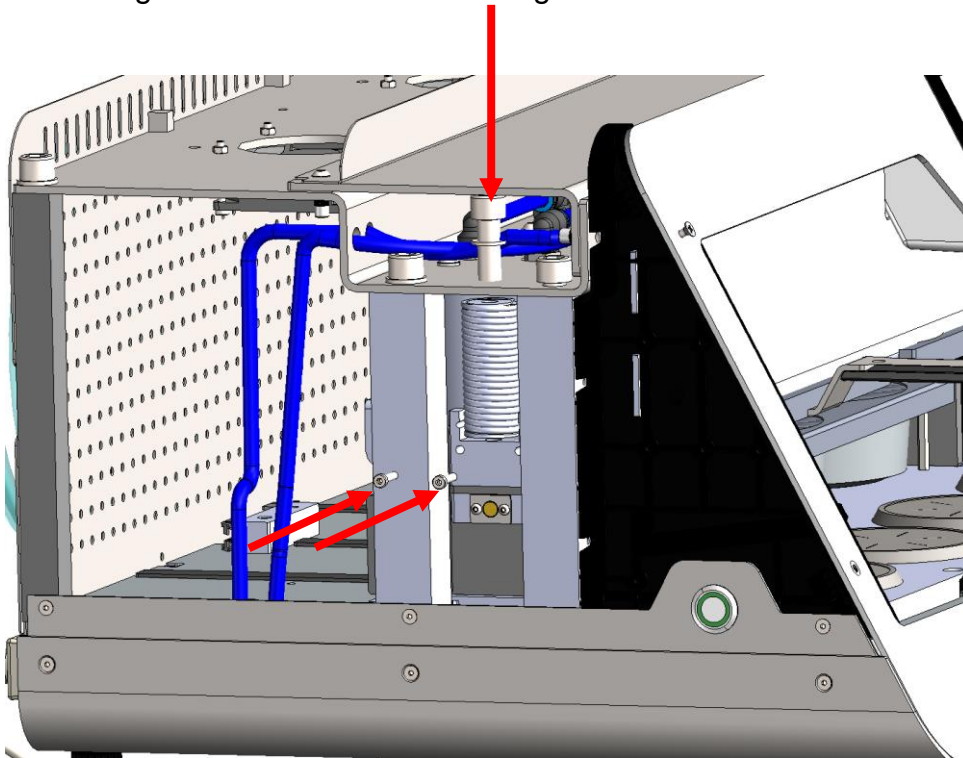
Remove the 2 slotted screws from the mounting block. Now replace the broken guide plate with a new one. Make sure that the flat side of the guide plate faces the brass pressure piece. Secure the plate with the slotted screws. Then screw the mounting block to the crossbar with the 2 Allen screws.



Replacement guide plate with spring 3030.113 *from SN 10136*

7

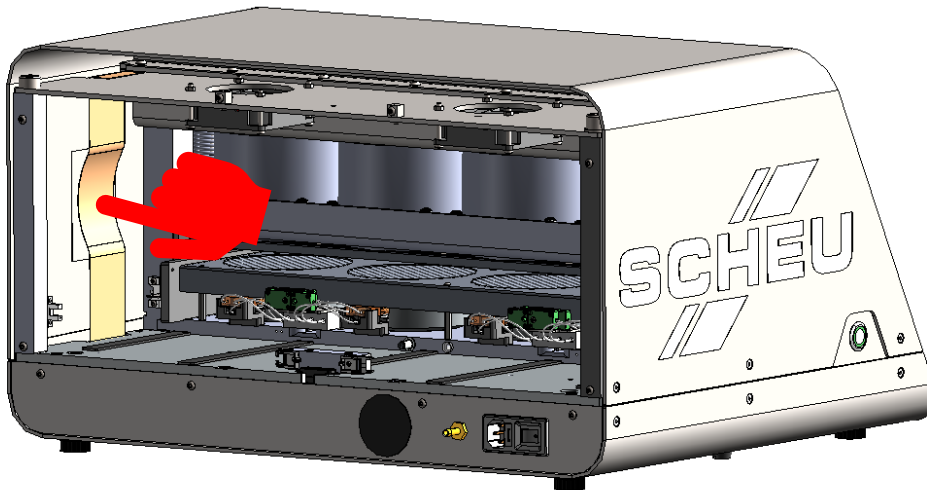
Schrauben Sie den Montageblock mit den 2 Inbusschrauben wieder an und befestigen Sie die Feder mit der Inbusschraube und der Unterlegscheibe von oben mit dem gekürzten Inbusschlüssel.



Replacement guide plate with spring 3030.113 *from SN 10136*

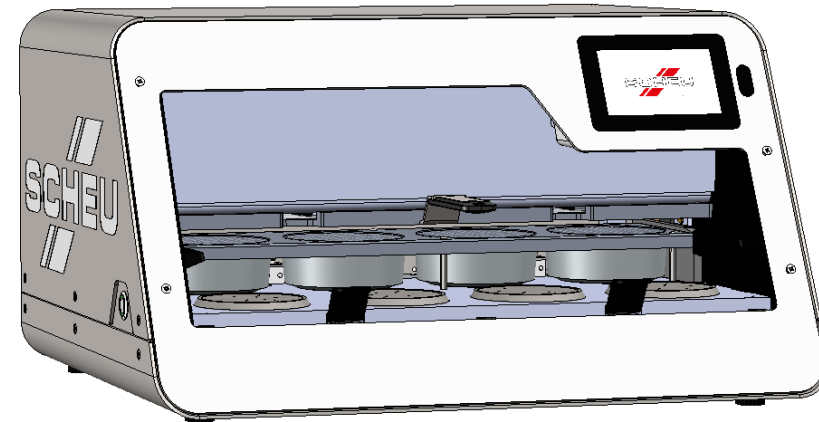
8

Slide the upper part of the housing onto the lower part and secure it with the 6 screws on the side. Then press the ribbon cable onto the double-sided adhesive tape on the upper part of the housing. This prevents the ribbon cable from becoming entangled with the reflector plate and, in the worst case, tearing off.



9

Now attach the rear panel with the 6 screws.



Replacement guide plate with spring 3030.113 from SN 10136

